

V8 Series



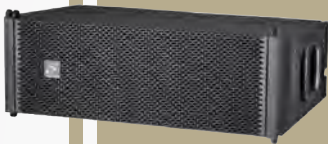
8" PASSIVE ARRAY

V8 line array speaker is a 2 way system, supplying a frequency scope of 65Hz-20kHz, the design of the cabinets produce a smooth frequency and phase response. Two 44mm tweeter compression units and two 8" bass units form a middle /high frequency system, which supplies a high SPL/volume ratio.

The Mid / Low frequency of V8 utilizes two 150W 8" paper cone bass units fitted with a specially designed acoustic mesh cover, which can prevent interference and optimize the middle frequency directivity. The High frequency utilizes two 44mm compression drivers. These decrease greatly the HF comb-filtering and enhances the sound articulation for long distances.

The V8 cabinet is ladder-shaped, featuring a precise aluminium hanging system. The connection angles between cabinets can be adjusted between 0°- 6° to meet the requirement for different locations.

The cabinet surface feature wear-resistant black galaxy paint. Large scoop carry handles, and Neutrik NL4 connectors on all cabinets complete the features.



V8 2-WAY PASSIVE MF/HF ENCLOSURE

- 2 x 8"(203mm) / 2" voice coil
- 2 x 1.75" (44mm) neodymium compression driver
- Ultra compact with durable finish
- Fully adjustable aluminium suspension system available



V8S PASSIVE LF ENCLOSURE

- 2 x 15"(388mm) / 4" voice coil
- Large 2.6" voice coils to deliver consistent high power
- Ultra compact with durable finish
- Adjustable suspension system and convenient scoop handles



TRX218S 2x18" PASSIVE SUBWOOFER DESIGNED FOR V5, V6, V8 SYSTEMS

It is a subwoofer that brings surging and powerful bass to the system. While it is added for more low end, the TRX218S is the main woofer and the V8S becomes the subwoofer, greatly enhancing the system sound reinforcement effect.

Specification

	V8	V8S
MAX SPL ¹ PEAK ²	MF 128dB / HF 135dB MF 1200W / HF 320W	137dB 4000W
PGM RMS	MF 600W / HF 160W MF 300W / HF 80W	2000W 1000W
WEIGHT	30kg	64kg
Cabinet type	2-way passive line array	passive line array woofer
Frequency response	65Hz - 20kHz (-10dB) / 80Hz - 18kHz (+/-3dB) MF 97dB / HF 110dB	40Hz - 500Hz (-10dB) / 45Hz - 400Hz (+/-3dB) 101dB
Sensitivity 1W@1m	90 × 6 degree	-
Coverage (H × V)	2 × 8" / 50mm VC	2 × 15" / 100mm VC
MF/LF Driver	2 × 1.75" / 44mm VC NdFeB	-
HF Driver	MF 16 ohm / HF 16 ohm	4 ohm
Impedance	300Hz / 2kHz	300Hz
Crossover frequency	0-6 degree (1 degree step)	-
Vertical spread angle	743 × 276 × 440mm	743 × 554mm × 703mm
Dimensions (W × H × D)		

1- 1m, free sound field
2- IEC filtered noise with a peak factor of 6dB

SUGGESTED SETUP CONFIGURATION

8	V8	Line Array Element	1	QX2-1300	2x650w Power Amplifier For V8 : HF
2	V8S	Line Array Subwoofer	1	QX2-3000	2x1500w Power Amplifier For for V8 : MF
4	TRX218S	2x18" Passive Sub Cabinets	1	QX2-3000	2x1500w Power Amplifier For for V8S : LF
1	AC48II	4 In 8 Out Speaker Processor	2	QX2-4000	2x2000w Power Amplifier For TRX218S Sub

V8 +V8S +TRX218S