

EXPECT THE BEST



V26A / V26SA
Active Line Array Speaker



**Unit 11,
Torc:MK
Chippenham Drive
Kingston
Milton Keynes
MK10 0BZ
United Kingdom.
Tel: +44(0)1908 281072 email: enquiries@studiomaster.com
www.studiomaster.com**

**USER
GUIDE**

IMPORTANT SAFETY SYMBOLS



Use only with the cart, stand, tripod, bracket, or table specified by the manufacturer, or sold with the apparatus. When a cart is used, use caution when moving the cart/apparatus combination to avoid injury from tip-over.



The symbol is used to indicate that some hazardous live terminals are involved within this apparatus, even under the normal operating conditions, which may be sufficient to constitute the risk of electric shock or death.



The symbol is used in the service documentation to indicate that specific component shall be replaced only by the component specified in that documentation for safety reasons.



Protective grounding terminal



Alternating current/voltage



Hazardous live terminal

ON: Denotes the apparatus is turned on

OFF: Denotes the apparatus is turned off.

WARNING: Describes precautions that should be observed to prevent the danger of injury or death to the operator.

CAUTION: Describes precautions that should be observed to prevent danger of the apparatus.

1. IMPORTANT SAFETY INSTRUCTIONS

- **Read these instructions.**

- **Keep these instructions.**

- **Heed all warning.**

- **Follow all instructions.**

- **Water & Moisture**

The apparatus should be protected from moisture and rain, can not used near water, for example: near bath-tub, kitchen sink or a swimming pool, etc.

- **Heat**

The apparatus should be located away from the heat source such as radiators, stoves or other appliances that produce heat.

- **Ventilation**

Do not block areas of ventilation opening. Failure to do could result in fire. Always install accordance with the manufacturer's instructions.

- **Object and Liquid Entry**

Objects do not fall into and liquids are not spilled into the inside of the apparatus for safety.

- **Power Cord and Plug**

Protect the power cord from being walked on or pinched particularly at plugs, convenience receptacles, and the point where they exit from the apparatus.

Do not defeat the safety purpose of the polarized or grounding-type plug. A polarized plug has two blades with one wider than the other. A grounding type plug has two blades and a third grounding prong. The wide blade or the third prong is provided for your safety.

If the provided plug does not fit into your outlet, refer

to electrician for replacement.

- **Power Supply**

The apparatus should be connected to the power supply only of the type as marked on the apparatus or described in the manual. Failure to do could result in damage to the product and possibly the user.

Unplug this apparatus during lightning storms or when unused for long periods of time.

Where the MAINS plug or an appliance coupler is used as the disconnect device, the disconnect device shall remain readily operable.

- **Fuse**

To prevent the risk of fire and damaging the unit, please use only of the recommended fuse type as described in the manual. Before replacing the fuse, make sure the unit turned off and disconnected from the AC outlet.

- **Electrical Connection**

Improper electrical wiring may invalidate the product warranty.

- **Cleaning**

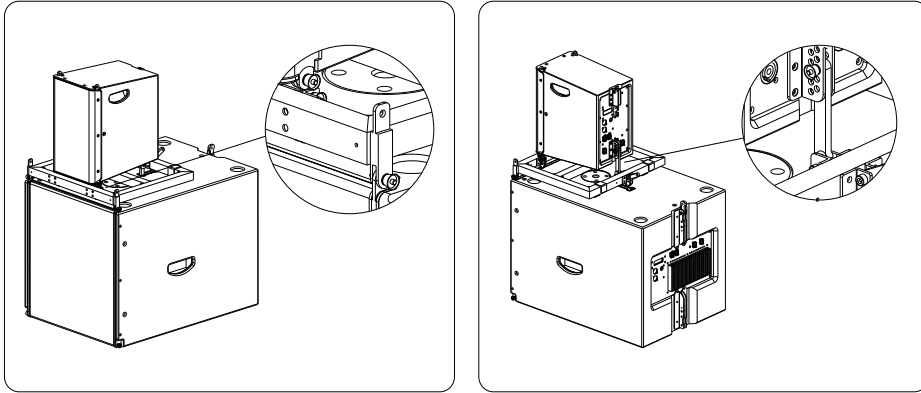
Clean only with a dry cloth. Do not use any solvents such as benzol or alcohol.

- **Servicing**

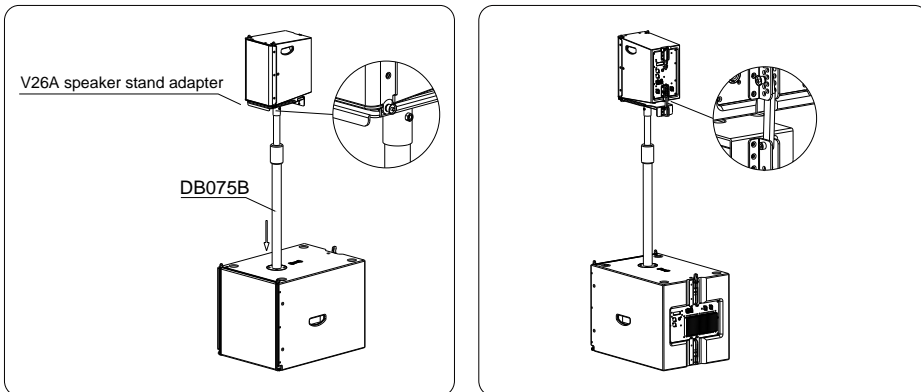
Do not implement any servicing other than those means described in the manual. Refer all servicing to qualified service personnel only.

• Only use accessories/attachments or parts recommended by the manufacturer.

5. The V26SA subs and V26A elements are connected by stacking:



6. The V26SA subs and V26A elements are connected by supporting:



It is recommended to install up to 3 pcs of V26A elements.

V series is a multi-purpose active coaxial line array , which is mainly used in occasions with high requirements for sound quality. The element and subwoofer adopt active integrated design, and the speaker is small in size and light in weight. Built-in DSP module have gain, frequency division, equalization, delay, limit, program memory and other functions. With a number of preset calls, the DSP module control all elements through the 485 network interface. The speaker cabinet is convenient to install and can be adjusted independently. This series is ideal for many kinds of sound reinforcement projects.

Application: touring show、 large/medium/small stadium、 theatre and auditorium, etc

Features:

1. The element V26A is small and light. The combination with great dynamic margin uses eight 1 inch neodymium dome HF unit and two 6.5 inch neodymium MF/LF unit. The SPL is as high as 129dB. The HF coaxial array is arranged above the MF unit , so that the sound image positioning is more accurate, and the far-field sound's field uniformity and clarity are improved.
2. The main speaker adopts 400W+150W efficiency D power amplifier, with high power and low distortion. Built-in powerful 24bit DSP speaker processing module have gain, crossover, equalization, delay, limit, program memory and other functions.
3. Equipped with 1200W high-power single 15 inch active line array subs V26SA , it can enhance the low-frequency up limit.
4. Factory built-in multiple preset, plug and play. All speakers can be controlled online through 485 network.
5. Flexible multi-combination application, including hanging, stacking and supporting, can meet the requirements of sound reinforcement projects.

The line array elements are trapezoidal to reduce the gap between two elements to minimum, thus to reduce the unwanted sound area, and to minimize the side lobe. The line array uses accurate AI suspension system. The cabinet angle can be adjusted in a range 0° - 8° to meet the requirement of different applications.

The V26SA line array cabinets features 40Hz-150Hz frequency, one 15 inch high power woofer. The speaker cabinet has a independent high power power amp and DSP. The speaker cabinet can be adjusted independently. The speaker cabinet quantity can be configured according to actual requirements , the system supports up to 14 pcs of elements to be flown without subs , or up to 10 stacking on subs.

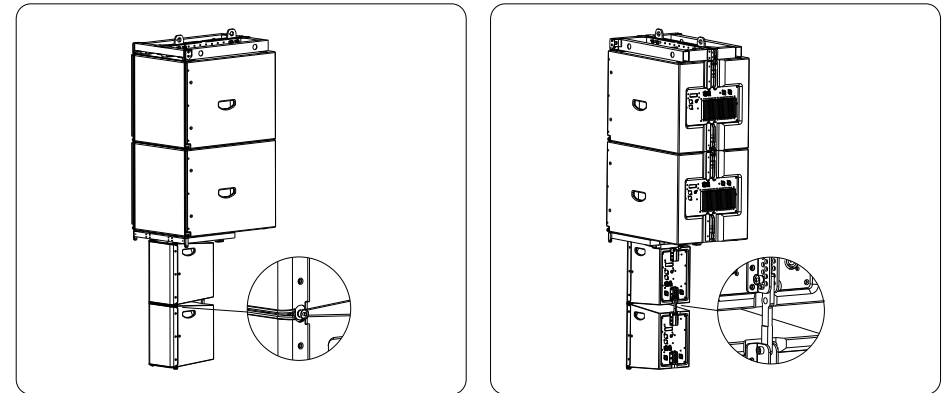
The V26A power amp uses high efficiency switching mode power supply, DSP module, for crossover, EQ, limit, delay, volume functions. DSP can be operated on the panel.

The GL26A enclosure with accurate AI suspension system to meet the requirement of different applications. Two handles are designed for easy transportation.

Application:

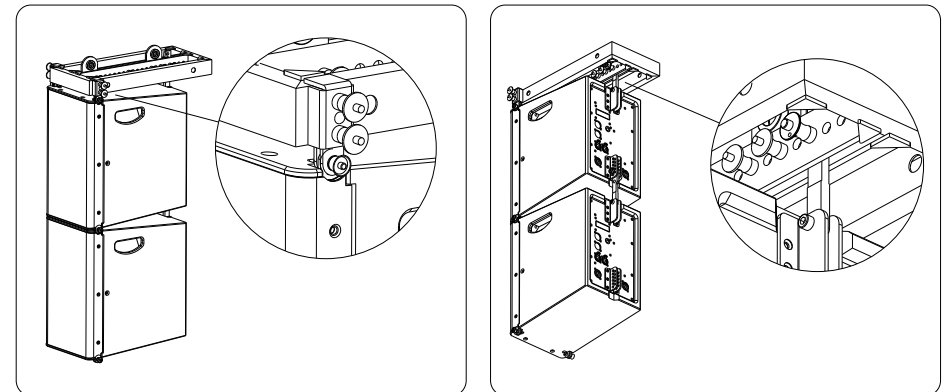
- * touring show
- * large/medium/small stadium
- * theatre and auditorium, etc

3. The V26A elements and V26A elements are connected with subs:



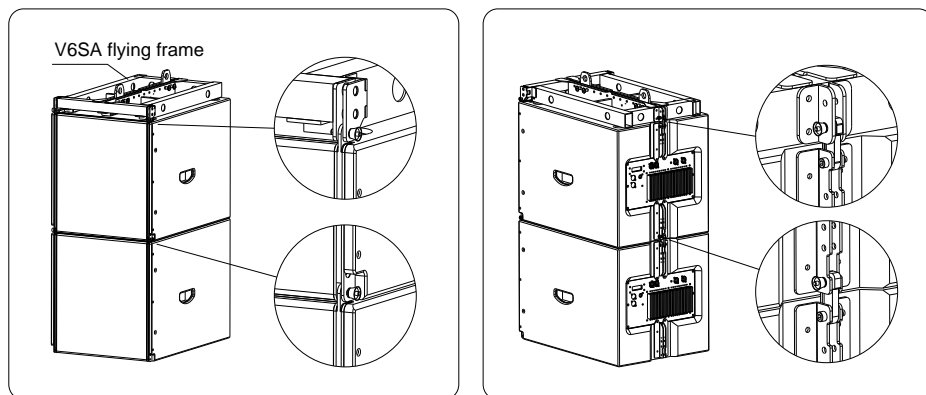
The V26A element has an adjustable angle of 8 °, with each 1 ° step.

4. The V26A flying frame and V26A elements are connected overhead:

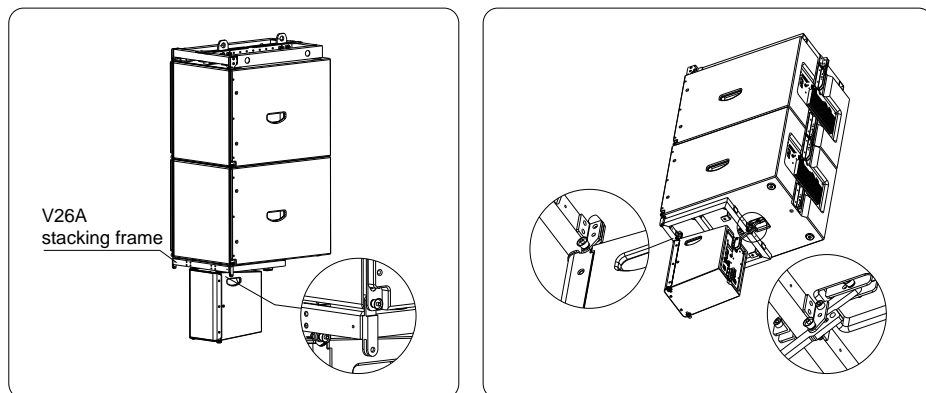


It is recommended to fly up to 16 pcs of V26A elements.

1. Connect the V26SA flying frame to the V26SA subs, and next V26SA sub :



2. The V26SA subs and V26A elements are connected by V26A stacking frame:



It is recommended to fly up to 8 pcs of V26SA subs.

Function Introduction

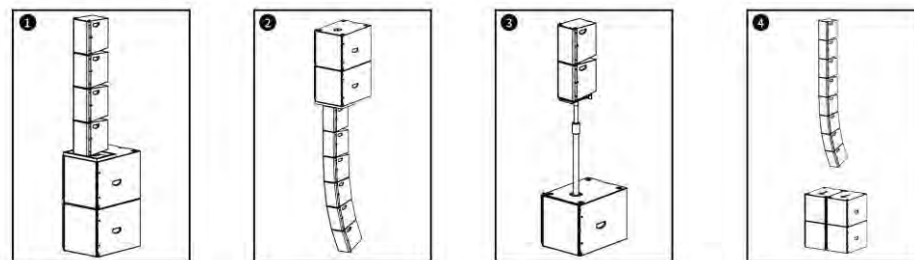
V26A panel



V26SA panel



Installation method



1. Stacking

2. Hanging

3. Supporting

4. Hanging

Specification

Model	V26A
Type	2-way active line array element
Frequency response	70Hz~20kHz
Horizontal coverage(-6dB)	120°
Vertical coverage(-6dB)	8°
LF unit	2×6.5" ferrite MF
HF unit	8x1"compression driver
Amp power	400W+150W
Max SPL	129dB
Input sensitivity	0dB
Voltage	230V/115V
Dimension (W×H×D)	205x354x340 (mm)
Weight	8.5kg

Model	V26SA
Type	active 15" line array subs
Frequency response	40Hz~150kHz
LF unit	1×15" ferrite bass unit
Amp power	1200W
Max SPL	130dB
Input sensitivity	0dB
Voltage	230V
Dimension (W×H×D)	474×506×673 (mm)
Weight	41kg
Material	Birch plywood

DSP Function Introduction

V26A

LEVEL 00dB	←	Level adjustment: -60dB~00dB
IN	←	Level indication: level/limit/clip indication
EXIT	←	Exit
MODE: NORMAL	←	Mode: HF 0dB, HF+3dB, HF+6dB, HF-3dB, custom
LOW OUT: OFF	←	Low cut: OFF、80、100、120、150
HIGH EQ: 0dB	←	HF Eq: ±12dB
MID EQ: 0dB	←	MF Eq: ±12dB
LOW EQ: 0dB	←	LF Eq: ±12dB
DELAY: OFF	←	Input delay: 0~16mS
LCD DIM: ON	←	LCD DIM: ON-OFF
BRIGHT: 5	←	Contrast: 0~10
CONTRAST: 5	←	Bright: 0~10
ADDRESS: 1	←	RS-485 Address: 0~255
RESET	←	Reset
INFO	←	Product information
EXIT	←	Exit

V26SA

LEVEL 00dB	←	Level adjustment -60~00dB
IN	←	Level indication: level/ limit/ clip indication
EXIT	←	Exit
MODE: NORMAL	←	Mode: normal、 outdoor、 custom
DELAY: OFF	←	Input delay: 0~16mS
LCD DIM: ON	←	LED DIM: ON-OFF
BRIGHT: 5	←	Contrast: 0~10
CONTRAST: 5	←	Bright: 0~10
ADDRESS: 1	←	RS-485 address: 0~255
RESET	←	Reset
INFO	←	Product information
EXIT	←	Exit